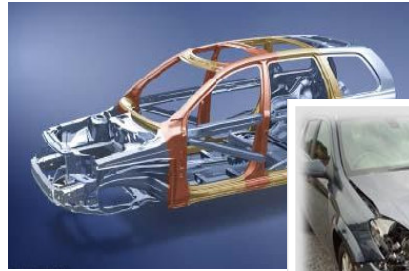


Improve Your Skills Increase Your Profit



Providing A Competitive Advantage
Through Total Business Performance



eScribe Workshop Methods

Your Estimator sits at the financial heart of the repair process but the pressure placed upon him to provide printed methods for use at the work bay could be one task to many when you are busy or in search of the most efficient process.

Don't be mistaken, the VDA will have to use eScribe or similar, to build his repair specification and research required tasks and safety related information to compile an accurate specification.

Many repairers have realised the amount of time required to locate and print the required information can be substantial, especially where the flow of work into the workshop is vital.

PAS125 states: (4.3.2) *"There shall be access by the person undertaking the repair task to current recognised repair methods for all types of vehicle body repair work authorised"*

With this in mind we have developed an "eScribe Workshop Methods" training program. This allows your VDA to concentrate on what is important, the repair specification and ensuring you have maximised the sales opportunity for each repair. This process for workshop methods, should not, in any way, be considered a substitute for the work your VDA has to carry out, but is part of the support network for your own internal procedures. When implemented correctly in your procedures, it can assist in promoting efficiency in the estimating function and reduce costs connected to VDA downtime and methods printing.

eScribe is Thatcham's multi-franchised methods & time system software, providing **published/recognised methods of repair** for a large amount of vehicle models. As with all software, familiarity with its navigation, the information it can deliver and the various areas of functionality will vigorously increase efficiency in your objectives, and improve the financial return on your investment. Be clear, the responsibility of producing a repair specification, that accurately identifies all the work operations and parts required to repair a vehicle, rests firmly with the **VDA**, and the liability of that repair rests firmly with the repairer. So ensuring your technicians have access to current repair methods is vital.

The purpose of this development program is to promote efficiency in using eScribe to provide (where applicable) accurate current methods of repair for the workshop technicians. It will assist in identifying vital safety related operations, and associated components, that may require specific procedures to remove & refit or replace. Our objective, as always, is to assist you and your company in securing justified and tangible improvements on your investment.

What's covered?

- What's New
- News Letter Search
- Accurate Vehicle Selection
- Methods & Reference Links
- Single Panel Replacement Methods
- Combination Panel Replacement Methods
- Methods Navigation, Selection and Printing

Costs and Time Lines

£420 per day. We come to you and train Two technicians per day, on site!
(This one day programme is not the same as required by Vehicle Damage Assessor)

Training is not expensive! "It's Priceless"

www.vehicledamageassessor.co.uk
james@vehicledamageassessor.co.uk
T: 01638 566461 M: 07874 297077

ARC Support Services ©